

COMPANY PROFILE

Star Light Factory

Star Light Factory (SLF) is an associated company of Star Light International, a subsidiary of Al AbdulKarim Holding. SLF was founded in the year 2015 to provide services in the Kingdom of Saudi Arabia.

With huge sales background and faith of the customer behind us for the last 20 years Al AbdulKarim Holding's subsidiary unit **Star Light** factory is now ready to serve the industry in the service sector.

Located in Jubail support industrial area, we aim to be a quick, reliable and cost effective organization providing quality services in the region.

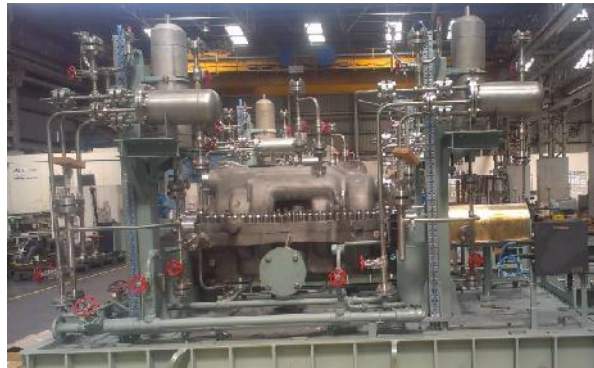
Star Light factory has established a well-equipped facility in Al-Jubail and has expert capabilities in the area of servicing, repair, retrofitting, refurbishment and testing of globally recognized brands of valves, pumps and actuators.

Star Light factory is ready to provide indigenous solution for servicing and maintenance/repair for

VALVES



PUMPS



ACTUATORS



Star Light factory is fully equipped



With a team of dedicated professionals and well managed structure, we are able to meet the client requirements as a service provider for the mentioned products.

Star Light factory provides specialized technical services, local backup & support during installation, commissioning and after Sales service.

Star Light factory is ready to take a wide range of contracts with governmental institutions, public and private sector clients. SLF will comply with relevant international standards and specifications to meet the client's requirement.

Star Light factory provides overall servicing, repairs, overhauling, spare parts and retrofitting for most types and brands of valves, pumps and actuators.

Star Light factory is committed to satisfy all applicable statutory and regulatory requirements.

Address : *Star Light Factory*
Jubail Support Industrial Area # 1
Al-Jubail – 31961
Kingdom of Saudi Arabia

Contact Persons : Afzal Bagdadi–Service Manager (+966 541388051)
Sayed Zulfikar – Marketing Executive.